

Myfridgeonline



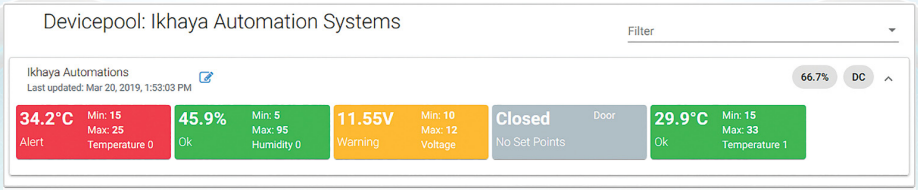
Myfridgeonline are specialist leaders in Real Time Temperature Monitoring for Refrigerated Vehicles, Fridge, Freezers, Cold Rooms, Server Rooms and Pharmaceutical.

We provide a **Remote Wireless Temperature Monitoring System**, which in all essence is truly wireless from its sensors and communication to alerts. We utilise cutting edge technology to provide a real-time window into your business allowing you to monitor your critical variables from anywhere in the world via the internet. Completing the cold chain is what we do! The spin-off is increased Quality Control, Reduced Losses, More in-the-pocket Saving and Reduced Carbon Footprint.



Dashboard

- Interactive user friendly dashboard



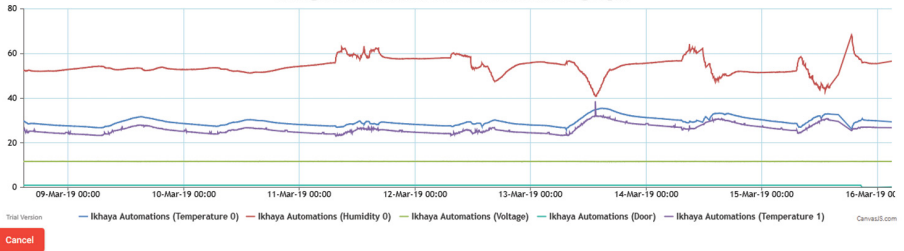
Graphs

- Min Max Line
- Zoom
- Pan
- Multi Graph
- Print or Download
- Line, Bar, Scatter, Column, etc.

Sensor(s) Graph

Chart Type: Line
Specified Range: 1 Month

Ikhaya Automation sensor month line graph



Reports

- Excel Based Reports
- Detailed or Summarised
- Max, Min, Average & MKT
- Log Downloads
- Exception Report
- Built in Graphs
- Alarm History



Technical Specifications VM 1000

General

Model	VM 1000
Dimensions	135mm x 100mm x 50mm
Weight	0.45kg
Mounting method	Velcro/Mounting Screws
Mode of Communication	4G / GPRS / GPS / Wi-Fi
Mode of operation	Electronic
ICASA Approval	TA-2018/2266
WHO Approval	PQS Code: E006/061

Environmental Specifications

Operating Temperature	5°C to 60°C
IP Rating	IP 54
Storage Temperature	5°C to 50°C

Electrical Specifications

Input Supply	100 – 220Vac Adaptor with 12vdc output, 1 Amp (centre pin positive)
Standalone Battery Backup	Yes (Lithium - Non rechargeable)
Current Consumption @ 12V	Active Mode (GSM Transmission active): 150mA (typical) average Instantaneous peak current: 0.6 - 1 Amp Standby Mode: 55mA, Display ON Standby Mode (Adapter): 15mA (Power Down - LCD Off) Standby Mode (Battery): 40uA
Battery Type	Lithium Non Rechargeable
Battery operating life	3-5 Years

Logging

Logging Interval	Default: 10 Minutes Minimum: 1 Minute Maximum: 1440 Minutes (Configurable in 1 minute step duration)
Standard Upload Frequency	Once per day or on alarm when in battery mode; configurable when connected to mains power
Memory capability	14 000 logs internal Flash

Communication

Bandwidth Standard	802.11 b/g/n
Encryption	WPA2 Enterprise
Range	50m to 100m Line of sight (environment dependant)

Alarms

On-board	LCD Internal Buzzer
Remote	SMS, Email, Web

User interface

Viewing and Programming	WEB Membrane & LCD
-------------------------	-----------------------

Quality

Standard	ISO 9001-2015
----------	---------------

Inputs

Digital Inputs	One (Door Sensor)
----------------	-------------------

Temperature Sensor

Digital Probes	4 ports but up to 8 sensors in parallel (Max of 80 meters cable in total)
Sensor Temperature Range	-30°C to +55°C
Sensor Temperature Accuracy	±0.5°C (-20°C to +55°C)
Sensor Resolution	0.0625°C steps
Response Time	30 seconds
Cable Length	2m (Extendable)
IP Rating	65

Internal Temperature Humidity Sensor

Digital Probes	1
Sensor Temperature Range	0°C to +60°C
Sensor Temperature Accuracy	±0.3°C
Sensor Humidity Range	0% to 100%
Sensor Humidity Accuracy	±2%

Interface

Membrane	Control Buttons
----------	-----------------

Display

Type	Graphic, OLED Backlit
Resolution	128 x 64 Pixels
Colour	Blue
Display Length / Width	65mm x 33mm

Product Specification VM 1000

- SMS, Email & Buzzer alert, Telegram
- Alert can be cancelled via the keypad or response via SMS/Email
- User programmable delay on an alarm
- Pre-defined time delay between SMS/Email escalation recipients
- On-board recorded alarm history with date & time of last alarm event
- Door Alarm
- On-board Min Max history
- On-board Temperature and Humidity for ambient monitoring
- On-board calibration
- Battery Powered (not mains reliant)
- Battery capable of lasting up to 5 years (default settings)
- 12vdc input jack
- Mounting via velcro or wall plugs
- Automated software update (GSM)
- Interactive web hosting service
- Interactive, backlit OLED display
- GPS & Wi-Fi enabled

