

Health And Safety Guidance

General Health and Safety Precautions

Device Handling

- Ensure HS2 Tablet (HS2-T) and the HS2 Dongle(HS2-OTG) is securely mounted or placed to prevent accidental drops.
- Avoid using the HS2 Tablet (HS2-T) and the HS2 Dongle(HS2-OTG) in environments where it may be exposed to water or excessive moisture.

Heat Management

- Monitor the HS2 Tablet (HS2-T) temperature regularly. Exposure to high ambient temperatures may cause the device to overheat.
- If the HS2 Tablet (HS2-T) becomes excessively hot to touch, discontinue use immediately and allow it to cool down before resuming operation.

Electrical Safety

- Use only the manufacturer's provided power supply (HS2-EPS) or a WHO M2M accredited power source.
- Avoid overcharging the HS2 Tablet (HS2-T) to prevent battery damage and potential fire hazards.
- Ensure that charging cables are not damaged or frayed and are kept away from heat sources.

Emergency Situations

Overheating or Fire

- If any part of the device begins to overheat or emits smoke, turn them off immediately and disconnect from any power source.

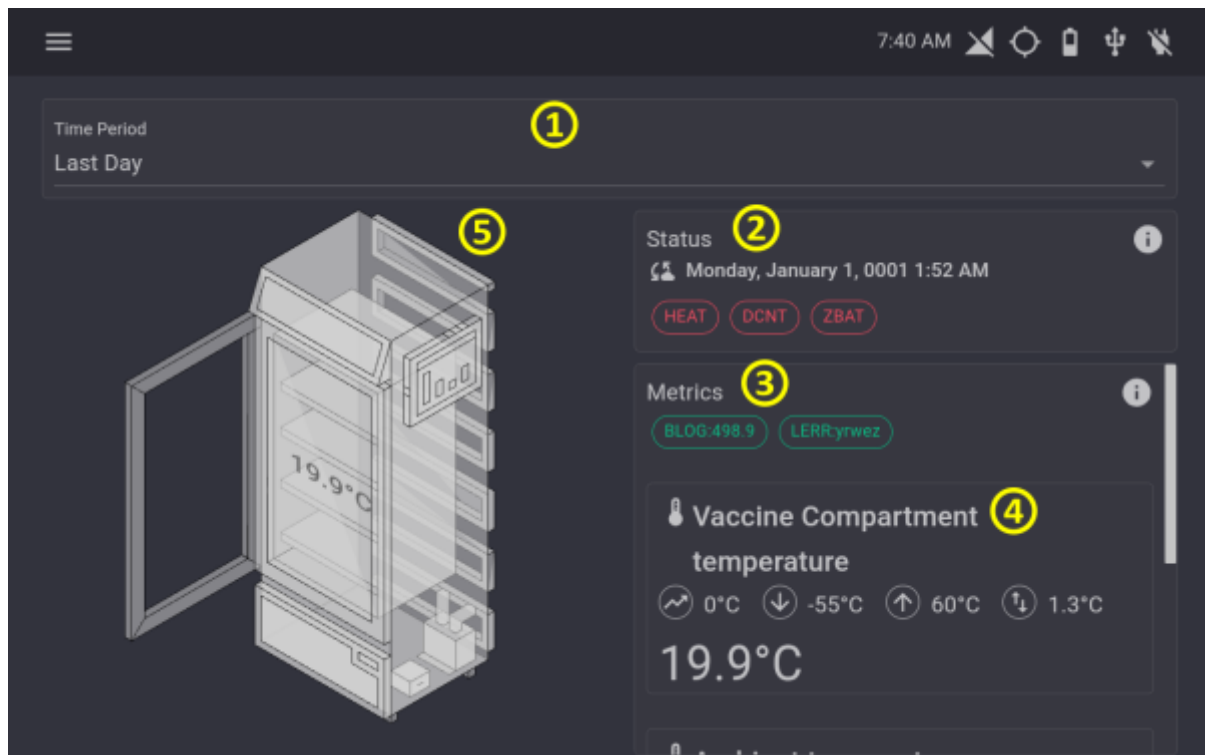
Battery Leaks

- In case of battery leakage, avoid contact with the leaked material. If contact occurs, wash the affected area with plenty of water and seek medical attention.

Basic operations

Dashboard

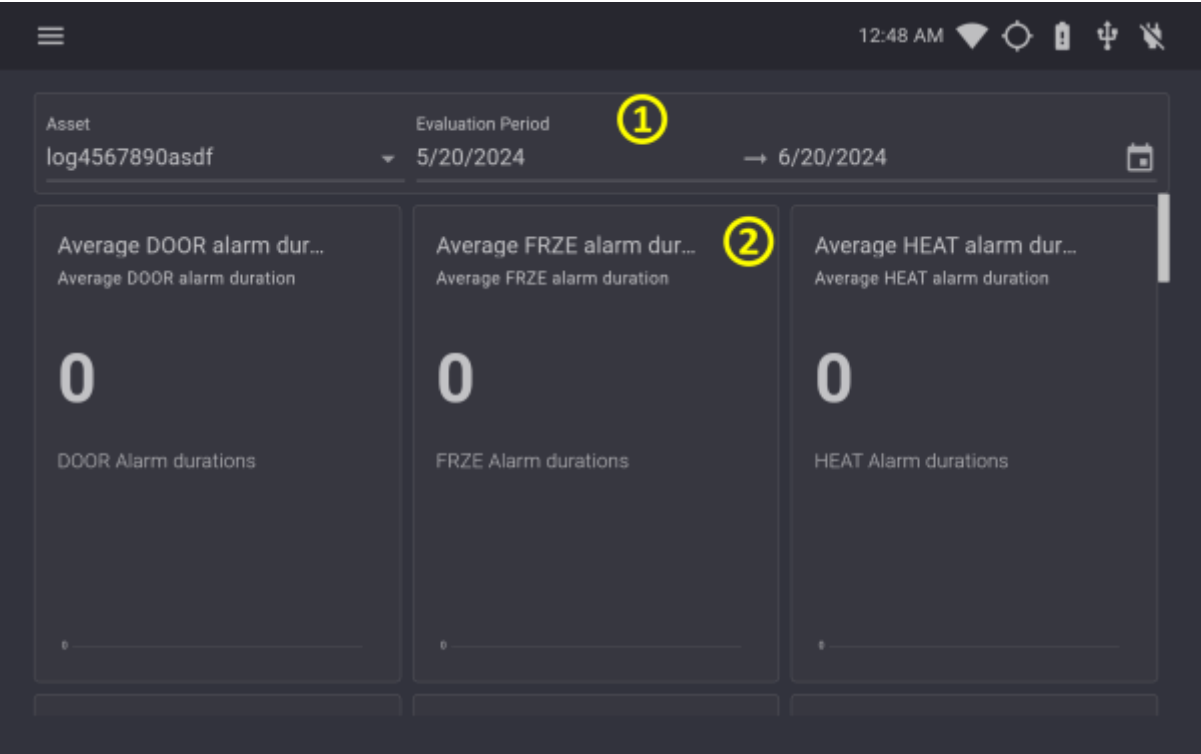
This page displays the following:



1. A drop down menu where the asset can be changed
2. The current status of the fridge and if any alarms are active
3. Logger errors
4. The fridge metrics e.g Vaccine Compartment temperature
5. A diagram showing fridge temperatures/alarms

KPI (Key Performance Indicator) page

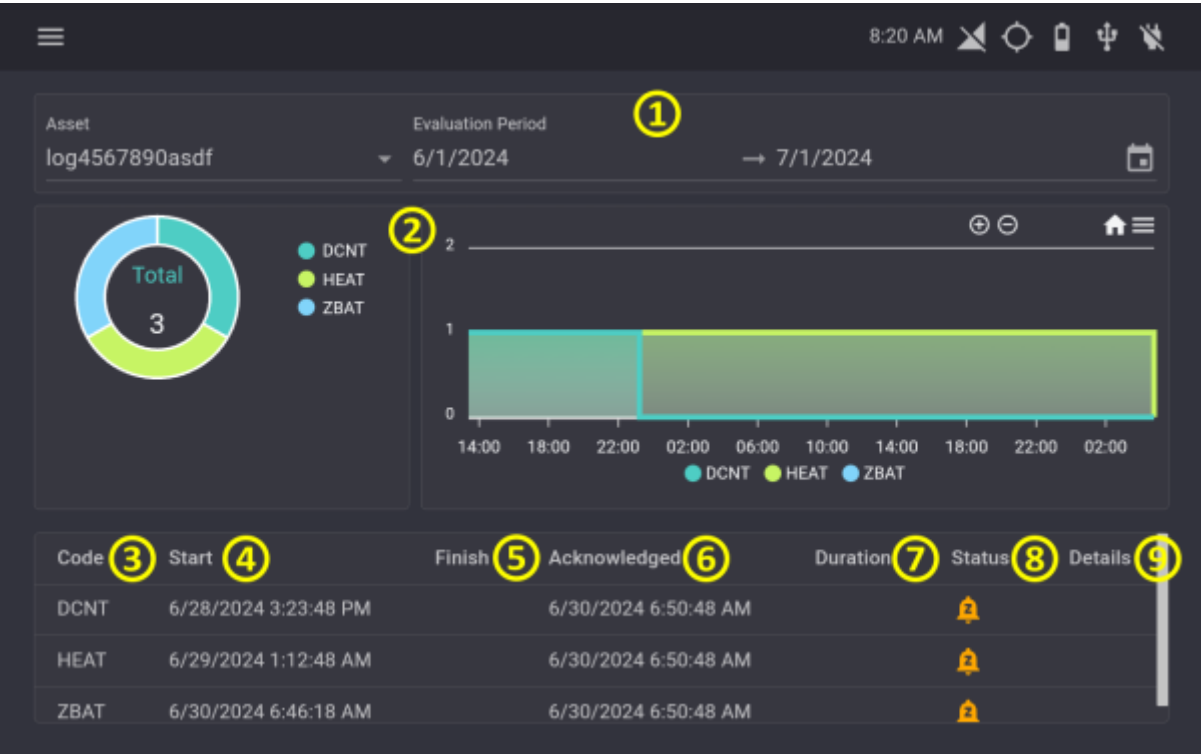
This page displays the following:



- 1. A drop down menu where the time period and asset can be changed
- 2. Summaries for status of the fridge over a time period. E.g. Average HEAT alarm duration, total HEAT alarms etc.

Alarm History page

This page displays the following:



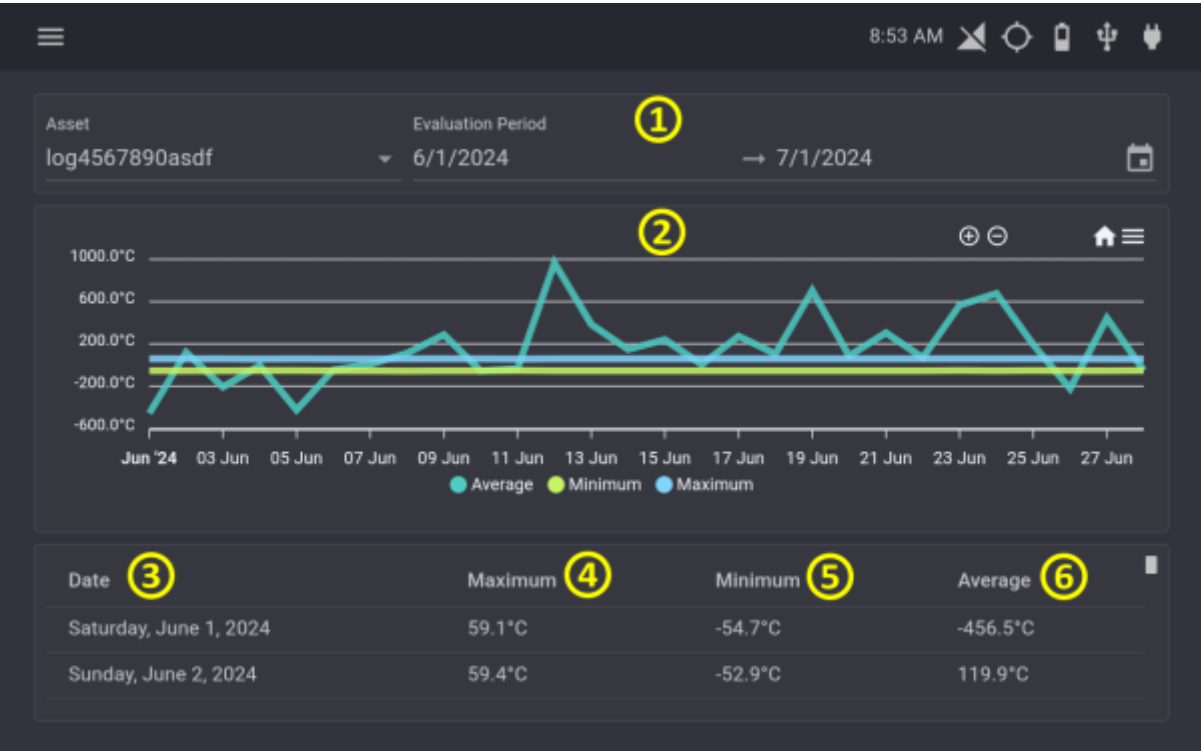
- 1. A drop down menu where the time period and asset can be changed
- 2. A donut chart and a stacked line chart showing trends in alarms over the selected time

period

- 3. The alarm code
- 4. The start time of the alarm (This may not be available if it is not within the selected time range)
- 5. The end time of the alarm (This may not be available if it is not within the selected time range)
- 6. Whether an alarm was acknowledged and the time it was acknowledged
- 7. Duration of the alarm
- 8. The alarm status (Active/Terminated)
- 9. Details about the fridge during the alarm

Summary page

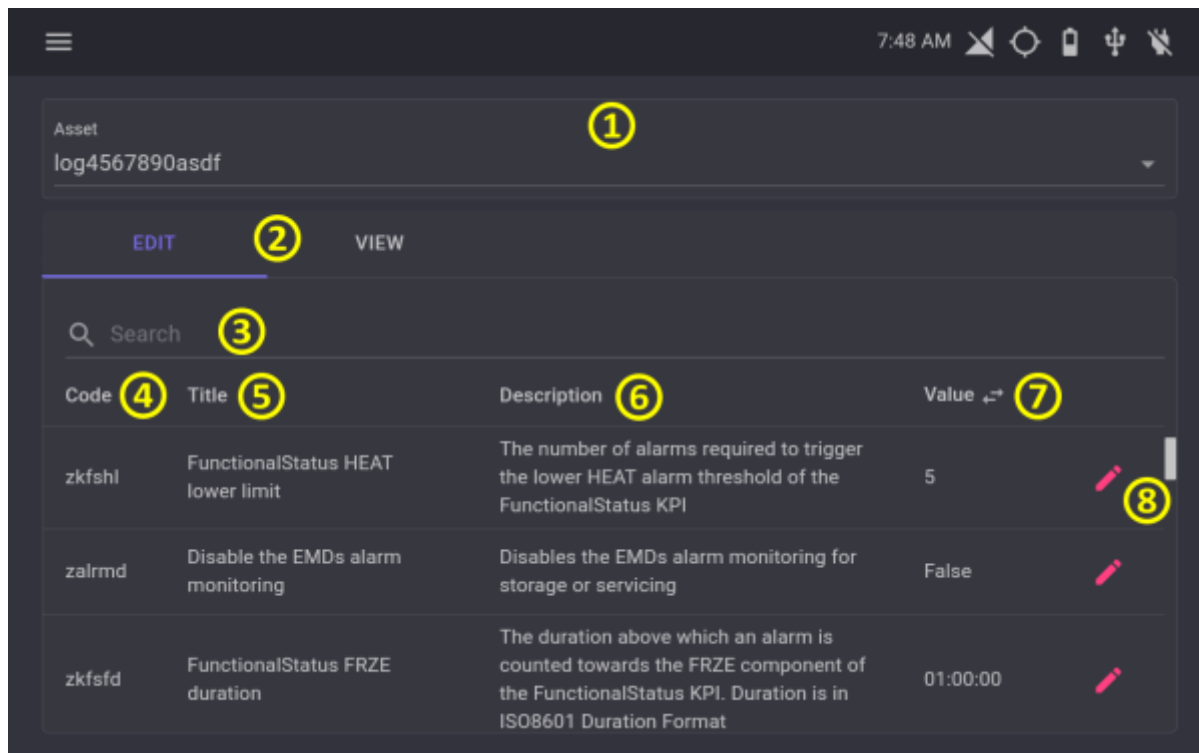
This page displays the following:



- 1. A drop down menu where the time period and asset can be changed
- 2. A chart showing trends in the average/maximum/minimum temperature of the asset
- 3. The date of the summary
- 4. The maximum temperature for the day
- 5. The minimum temperate for the day
- 6. The average temperate for the day

Parameters page

This page displays the following:



1. A drop down menu where the asset can be changed
2. Edit and view tabs which can be switched between
3. A search bar
4. The parameter code
5. The parameter title
6. The parameter description
7. The current value of the parameter
8. A button to edit the current value

Logger errors page

This page displays the following:

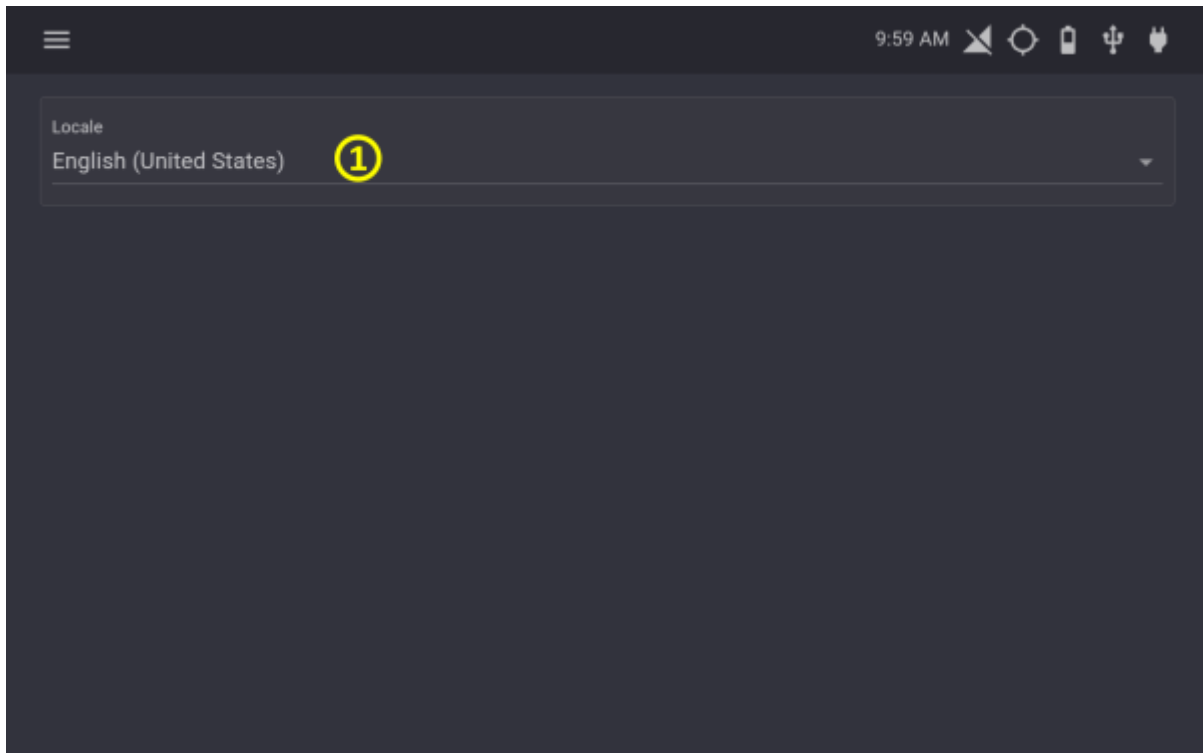
12:58 AM

Asset		Evaluation Period		
log4567890asdf		5/20/2024 → 6/20/2024		
Q Search				
Code	Start	Finish	Duration	Status
qpqjh	6/19/2024 8:13:28 AM	6/19/2024 8:28:28 AM	00:15:00	
axxaf	6/19/2024 8:28:28 AM	6/19/2024 8:43:28 AM	00:15:00	
puspo	6/19/2024 8:43:28 AM	6/19/2024 8:58:28 AM	00:15:00	
kxkdd	6/19/2024 8:58:28 AM	6/19/2024 9:13:28 AM	00:15:00	
chvdz	6/19/2024 9:13:28 AM	6/19/2024 9:28:28 AM	00:15:00	
dchtk	6/19/2024 9:28:28 AM	6/19/2024 9:43:28 AM	00:15:00	
ktstm	6/19/2024 9:43:28 AM	6/19/2024 9:58:28 AM	00:15:00	

1. A drop down menu where the time period and asset can be changed
2. A search bar
3. The error code
4. The start time of the error (This may not be available if it is not within the selected time range)
5. The end time of the error (This may not be available if it is not within the selected time range)
6. Duration of the error
7. The error status (Active/Terminated)

Preferences page

This page displays the following:



1. A drop-down menu which allows you to change the EMD language (N.B An app restart is required to apply the effects of the change)

Preventative tasks

Power Supply Check

Ensure power cable (HS2-BFMJ) and USB connection (HS2-CTC) are secure and undamaged. Please ensure the cables are not placed under strain to avoid unintentional damage.

Environmental Monitoring

Verify the surrounding temperature and humidity are within safe limits.

Screen Cleaning

Clean the screen with a microfiber cloth to remove dust and smudges.

Visual Inspection

Check the HS2 Tablet (HS2-T) and the HS2 Dongle (HS2-OTG) for physical damage, particularly around the mounting points.

Mounting Security

Ensure the HS2 Tablet (HS2-T) and the HS2 Dongle (HS2-OTG) is securely mounted and not at risk of falling.

Cable Management

Organize and secure any cables to prevent wear and accidental disconnection.

Port Inspection

Check charging and other ports for dust and damage.

From:

<https://docs.myfridgeonline.com/> - **MyFridgeOnline**

Permanent link:

https://docs.myfridgeonline.com/doku.php?id=products:hs2:user_manual

Last update: **2024/07/01 08:08**

